

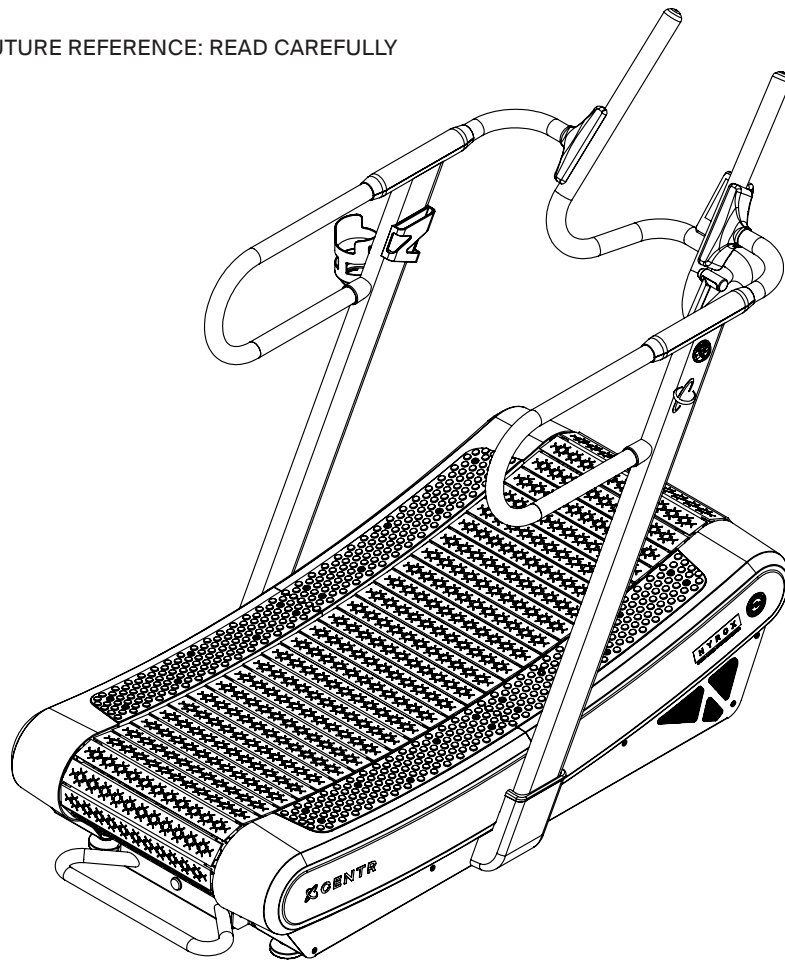


Model: NMT.2  
ITM. / ART:

## SERVICE MANUAL

# CENTR HYROX PERFORM TREAD

IMPORTANT, RETAIN FOR FUTURE REFERENCE: READ CAREFULLY



Manual to be used for Unit Serial Number Range:  
Starting S/N: NMT-9-24-09-000001

MADE IN CHINA  
80430-EN-V2025-02-12



## TABLE OF CONTENTS

IMPORTANT SAFETY INSTRUCTIONS.....	4
PARTS DIAGRAMS.....	5
PARTS LIST.....	6
ELECTRICAL WIRING DIAGRAM.....	7
ELECTRICAL COMPONENTS LIST.....	7
MAINTENANCE AND CARE.....	8

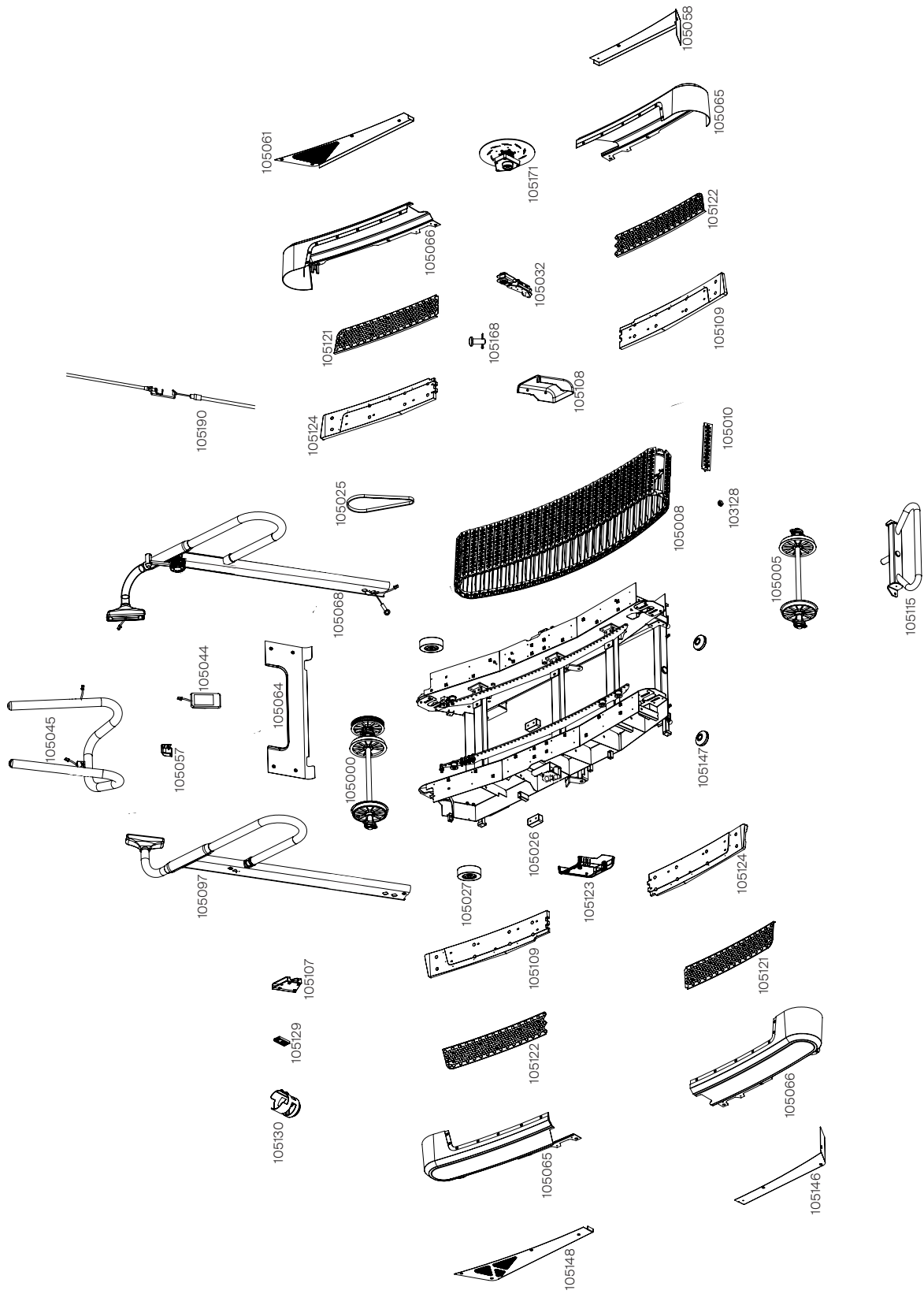
## **IMPORTANT SAFETY INSTRUCTIONS**

### **WARNING!**

Any diagnosis or repairs of this product should be done by a trained service technician or an individual who is aware of proper safety procedures.

To reduce the risk of injury to persons:

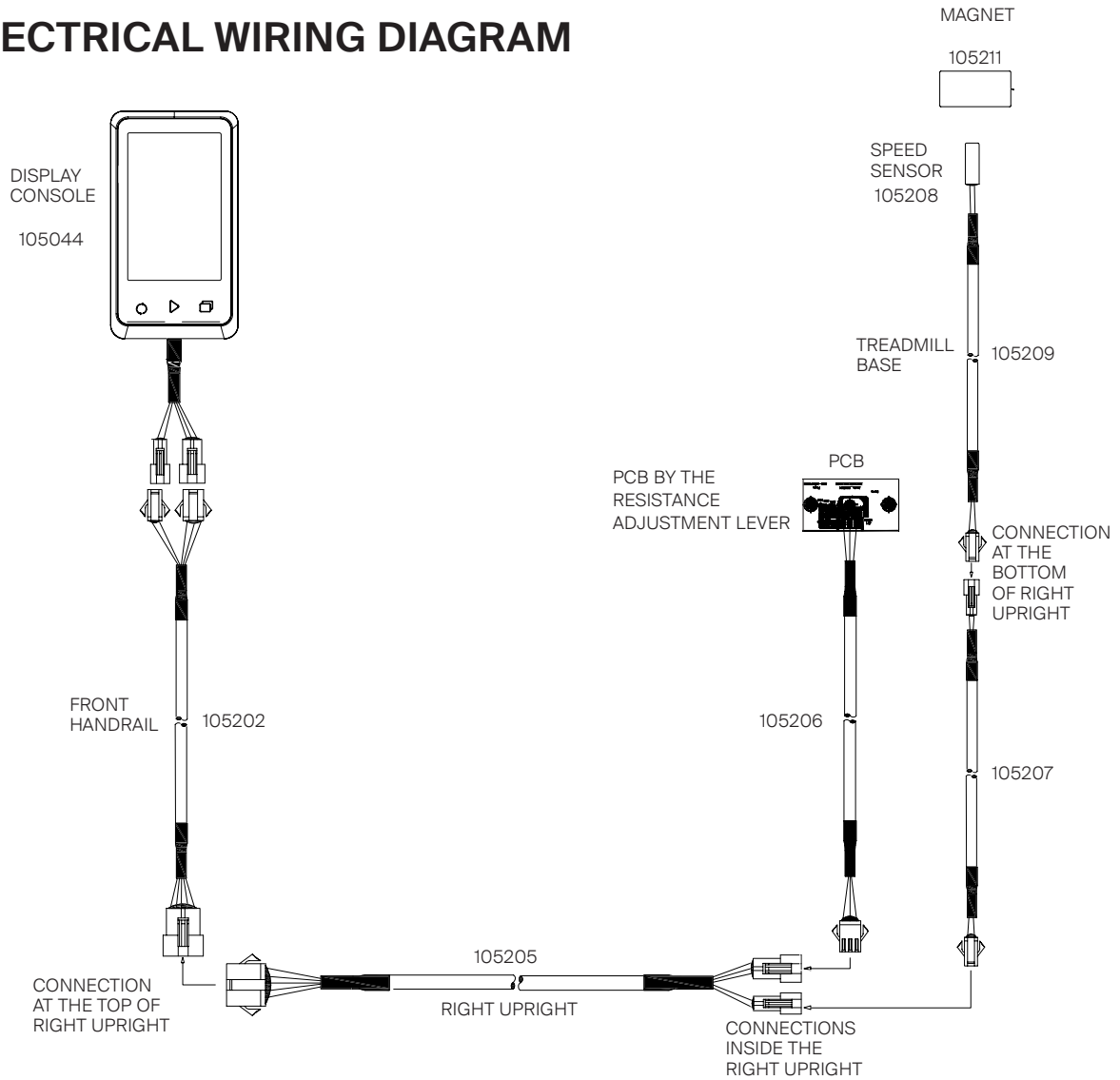
1. Read and understand the Important Safety Instructions before working on the machine. Failure to obey the instructions and safety warnings could cause injury to the service technician or bystanders.
2. Keep bystanders, children and pets away from the product being serviced at all times.
3. Make sure that the repair is done in an appropriate work space away from foot traffic and exposure to bystanders.
4. Be aware that as hardware is removed from parts on this machine, the loose parts may need to be supported or damage to you or the machine may occur. Be sure to be prepared to support the weight of the part before fully removing any hardware when servicing the machine. If necessary, use a second person to assist with supporting the part.
5. Some components of the equipment can be heavy or awkward. Enlist the service of a second person when you do maintenance steps involving these components. Do not try to do heavy or awkward steps on your own.
6. If replacement parts are necessary, use only genuine Centr replacement parts and hardware. Failure to use genuine replacement parts can cause a risk to users, keep the machine from operating correctly and will void the warranty.
7. Be sure that all warning stickers and instructional placards applied to the product are present and in good condition when doing maintenance or replacing components. If at any time the Warning labels become loose, unreadable or dislodged, replace the labels.
8. Do not try to change the design or functionality of the machine being serviced as this can adversely effect user safety and will void the warranty.
9. Do not use the machine until all shrouds, instructions, warning labels and correct functionality have been verified and tested for correct performance.



## CENTR

PART NUMBER	PART DESCRIPTION	QTY
105000	ASSY, SHAFT, FRONT	1
105005	ASSY, SHAFT, REAR	1
105115	ASSY, HANDLE ASSEMBLY	1
105008	ASSY, RUNNING BELT	1
105032	ASSY, MAGNETIC BREAKING SYSTEM	1
105123	UPRIGHT COVER, LH	1
105108	UPRIGHT COVER, RH	1
105171	ASSY, FLYWHEEL	1
105148	WLDMT, LEFT FRONT COVER	1
105061	WLDMT, RIGHT FRONT COVER	1
105058	WLDMT, REAR COVER, RH	1
105146	WLDMT, REAR COVER, LH	1
105130	BOTTLE HOLDER	1
105129	MOUNT, BOTTLE HOLDER	1
105107	CELL PHONE HOLDER	1
105097	ASSY, TUBE, HANDLEBAR, LH	1
105045	ASSY, FRONT HANDRAIL	1
105057	COVER, PLASTIC, DISPLAY CONSOLE MOUNT	1
105044	DISPLAY CONSOLE	1
105064	PLATE, FRONT COVER, BASE FRAME ASSY	1
105068	ASSY, TUBE, RIGHT UPRIGHT, RH	1
105190	MECHANICAL CABLE	1
105168	ASSY, COTTER PIN	1
105027	WHEELS, FRONT	2
105026	RUBBER BUMPER, BASE, FRONT	2
105065	SIDE COVER, REAR, RH, FRONT, LH	2
105066	SIDE COVER, FRONT, RH, REAR, LH	2
105121	FOOT COVER, REAR LH, FRONT RH	2
105124	DECK, FOOT COVER, RH, FRONT, LH, REAR	2
105122	FOOT COVER, REAR RH, FRONT LH	2
105109	DECK, FOOT COVER, RH, REAR, LH FRONT	2
105147	LEVELER, REAR	2
105010	RUBBER PLANK, RUNNING BELT	60
103128	NUT, M8	240

# ELECTRICAL WIRING DIAGRAM



# ELECTRICAL COMPONENTS LIST

PART NUMBER	PART DESCRIPTION	QTY
105044	DISPLAY CONSOLE	1
105202	ELECTRICAL CABLE, FRONT HANDRAIL, RIGHT UPRIGHT	1
105205	ELECTRICAL CABLE, INSIDE RIGHT UPRIGHT, TO PCB	1
105206	ELECTRICAL CABLE WITH PCB	1
105207	ELECTRICAL CABLE, CONNECTION AT BOTTOM OF THE RIGHT UPRIGHT	1
105209	ELECTRICAL CABLE, TREADMILL BASE	1
105208	SPEED SENSOR	1
105211	MAGNET	1

---

## MAINTENANCE AND CARE

	Task	Daily	Weekly	Monthly
1.	Keep the treadmill clean and dust components regularly.	X		
2.	Clean the side platforms and running deck to prevent debris buildup.		X	
3.	Clean the running belt surface with a clean damp cloth.		X	
4.	Inspect for loose hardware.		X	
5.	Ensure moving parts turn freely and quietly.	X		
6.	Confirm that the console turns on and check for any battery leaks.		X	



**CENTR**