

SHIUA

COMMERCIAL BROCHURE



SHIUA
STAY HEALTHY, UNLOCK ABILITY

WEB: WWW.SHUAFITNESS.COM MAIL: SHUHUA@SHUHUA.COM



9100 SERIES | CARDIO | 88 SERIES | 77 SERIES | 69 SERIES | 89 SERIES | 68 SERIES



CONTENTS

PATH OF PROGRESS	02
-------------------------	-----------

CARDIO

9100 Series	08
Other Cardio	14

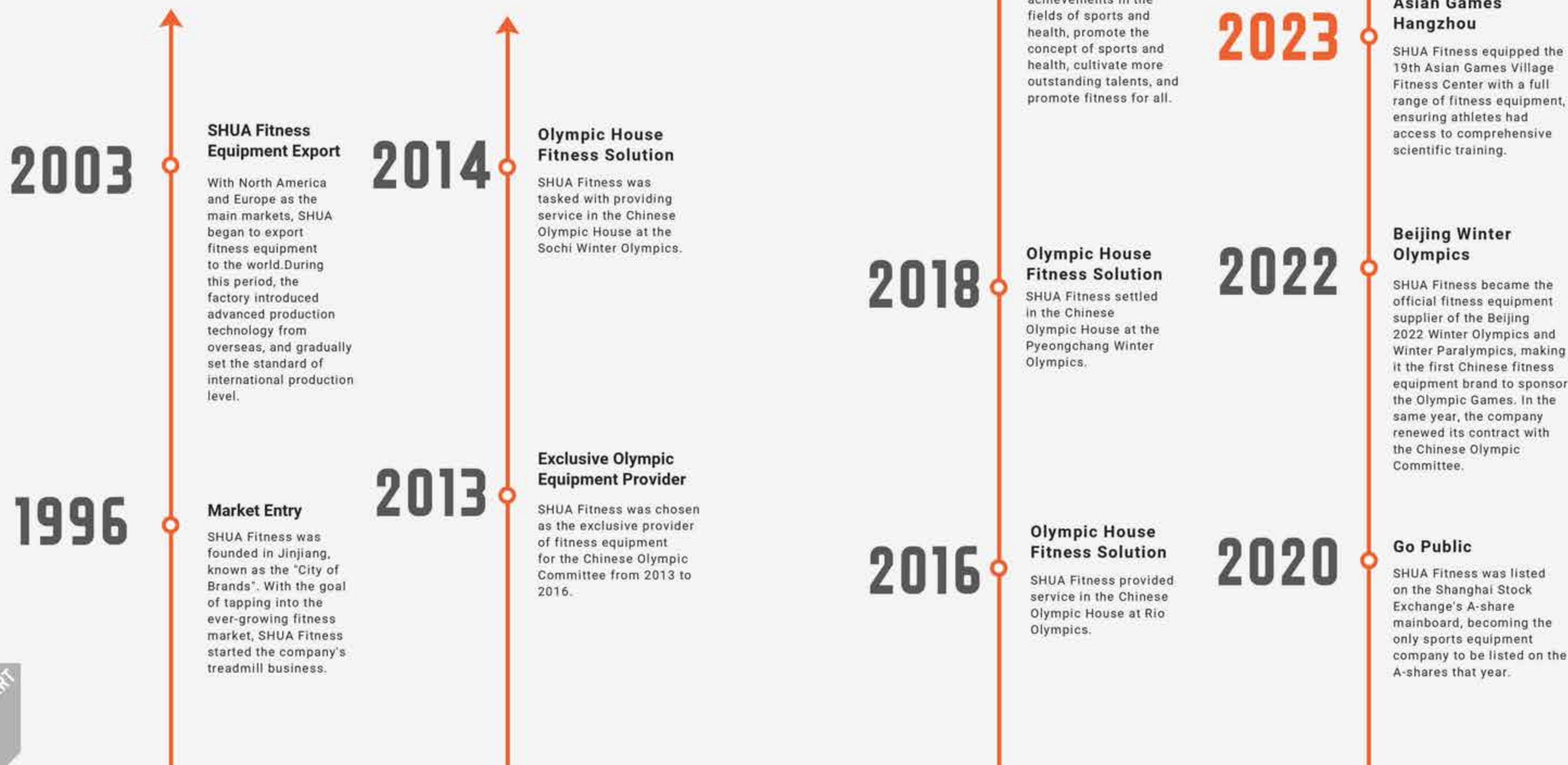
STRENGTH

88 Selectorized	28
77 Hybrid	50
69 Plate Loaded	58
89 Plate Loaded	68
68 Selectorized	80

SERVICES	94
-----------------	-----------

REDEFINE EXCELLENCE IN FITNESS EQUIPMENT

As the official supplier for the Olympic Games, SHUA is synonymous with top-tier performance and reliability. Our dedication to innovation and quality has propelled us to become a mainboard listed company and an ACSM certified partner, a testament to our enduring success and trustworthiness in the industry. Choose SHUA for unparalleled partnership, experience the difference that excellence makes in your fitness business journey.





OFFICIAL FITNESS EQUIPMENT SUPPLIER

SHUA has become a leading player in the fitness equipment industry, earning the prestigious role of official fitness equipment supplier for the Beijing 2022 Winter Olympics and Paralympics, including the Olympic and Paralympic Villages' fitness centers. This historic choice makes SHUA the first Chinese fitness equipment brand to be featured in the Olympics.



SHUA SPONSORED EQUIPMENT TO

2014

China Athletes Home at the 2014 Sochi Winter Olympics

2016

China Athletes Home at the 2016 Rio Olympic Games

2018

China Athletes Home at the 2018 Pyeongchang Winter Olympics

2020

Chinese Sports Delegation for the 2020 Tokyo Olympic Games

2022

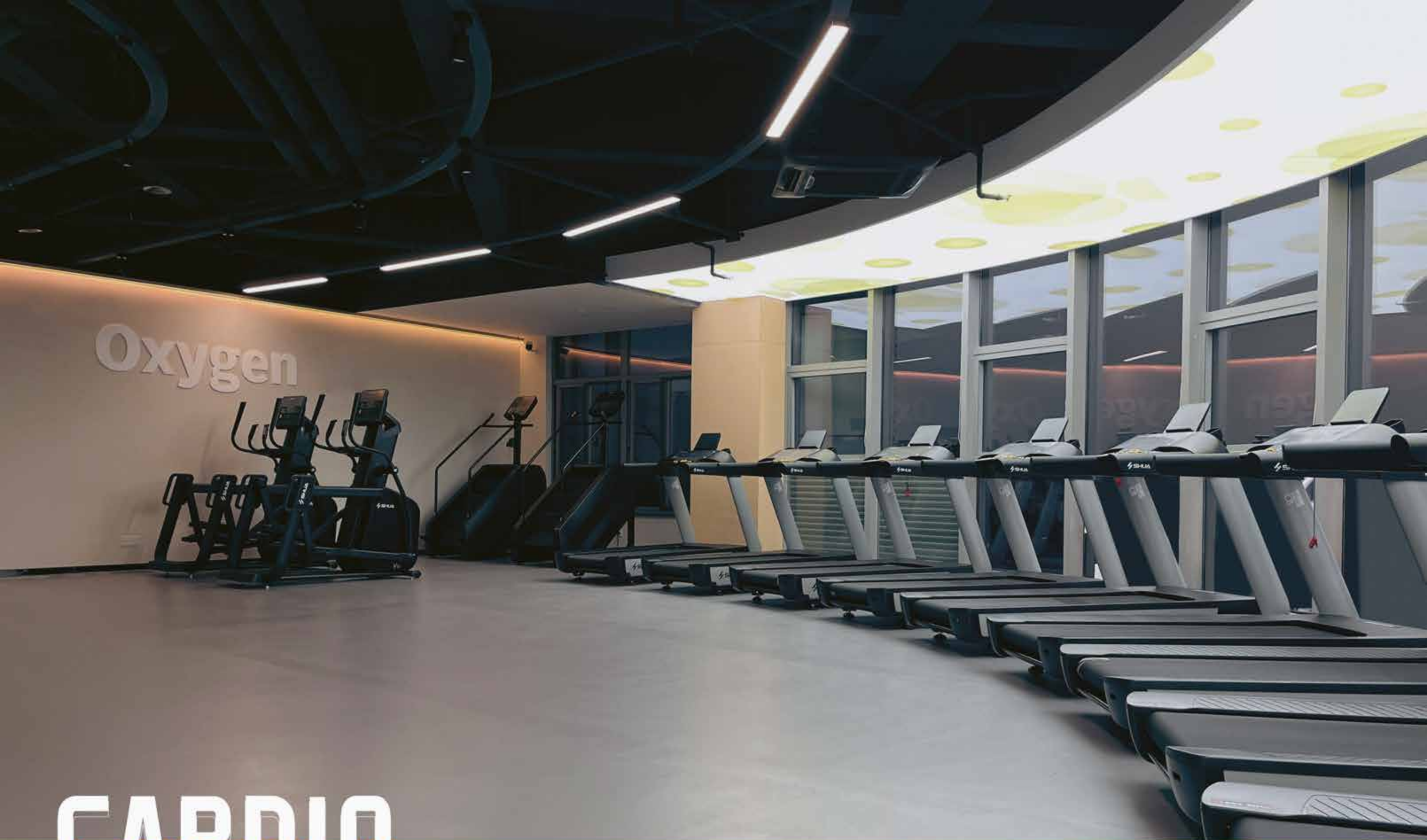
2022 Beijing Winter Olympics (Official Supplier)

2023

2023 Hangzhou Asian Games (Official Supplier)

2024

Chinese Sports Delegation for the 2024 Paris Olympic Games



CARDIO

SHUA cardio series encompasses treadmills, elliptical trainers, exercise bikes, and rowing machines. With decades of research in ergonomics and human biomechanics, our cardio products ensure the utmost level of performance, safety, and durability.

9100 SERIES



Dynamic Adaptive Running Deck

The S2* New Variable Resistance Treadmill adopts air pressure dynamic running feel control technology, offering six running feel modes: rubber track, cement pavement, soft soil, asphalt pavement, flat grassland, and intelligent adaptation. With a one-click quick switch, it provides a more tailored running experience for different runners.



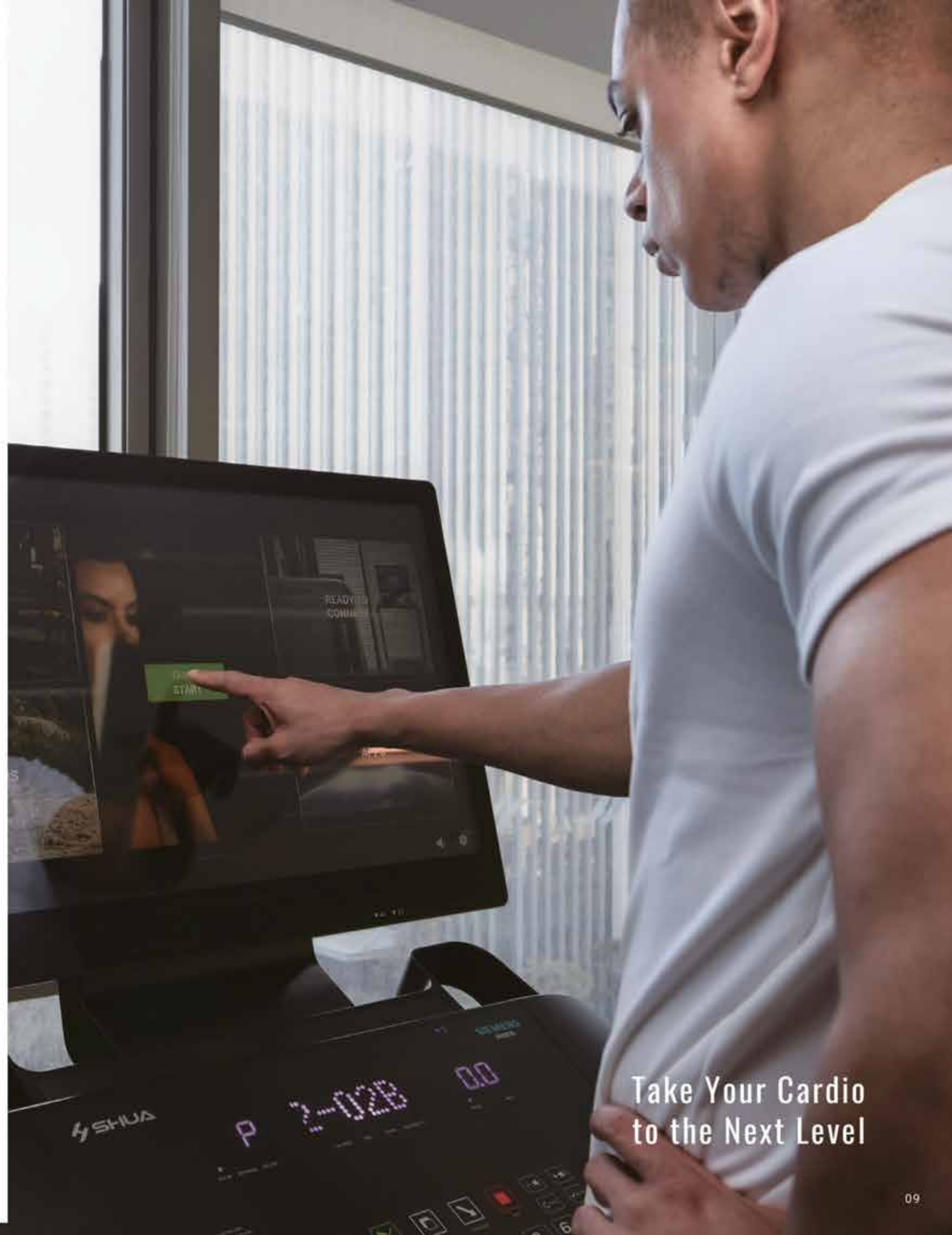
Scientific Gait Monitoring

The S2* features an intelligent sensing treadmill that continuously monitors running posture data, including impact force, left-right foot balance, cadence, stride length, and ground contact-to-air time ratio. It provides runners with guidance for posture optimization, supporting scientific running.



Laser Safety Shield

The S2* utilizes ToF (Time of Flight) laser distance sensing technology, combined with ST's third-generation FlightSense algorithm. It features automatic stain calibration and resistance to glass cover interference. The system can monitor whether the runner is within a safe zone. If the runner exceeds the safe range, it triggers a safety alert sound to ensure exercise safety.



Take Your Cardio
to the Next Level

NEW DIGITAL CONTROL SYSTEM

Introducing the SHUA Vital OS Console, a state-of-the-art system that delivers an unparalleled workout experience

Seamlessly syncing with your smartphone, it enhances your workout with personalized routines.

With easy access to essential information, our innovative interface ensures a focused and productive session.

Embark on virtual adventures and explore iconic destinations, all from the VitalOS digital console.



15.6"/21.5" Touch Screen



15.6" Keypad Screen



SH-T9100/SH-T9100T

COMMERCIAL TREADMILL

Drive System:
6.0 HP AC Dynamic Response Drive System

Speed Range: 0.5 - 25 km/h

Incline Range: -2 - 18%

Heart Rate:
Hand-grip Heart Rate
Wireless Heart Rate

Running Surface Area:
580 × 1570mm / 23 × 62 in

Max User Weight: 180 kg / 397 lbs

Dimensions(L×W×H):
2217 × 982 × 1814 mm
87 × 39 × 71 in

Net Weight: 220 kg / 485 lbs
Gross Weight: 260 kg / 573 lbs



SH-T9100

SH-B9100E/SH-B9100ET

COMMERCIAL ELLIPTICAL

Resistance System: Electromagnetic Resistance

Resistance Levels: 40 levels

Heart Rate: Hand-grip Heart Rate

Max User Weight: 180 kg / 397 lbs

Dimensions:
1825 × 872 × 1835 mm
72 × 34 × 72 in

Net Weight: 194 kg / 428 lbs
Gross Weight: 253 kg / 557 lbs



SH-B9100R/SH-B9100RT

COMMERCIAL RECUMBENT BIKE

Resistance System: Electromagnetic Resistance

Resistance Levels: 40 levels

Heart Rate: Hand-grip Heart Rate

Max User Weight: 180 kg / 397 lbs

Dimensions:
1663 × 620 × 1400 mm
65 × 24 × 55 in

Net Weight: 103 kg / 227 lbs
Gross Weight: 128 kg / 281 lbs

SH-B9100RT
15.6\"/>


SH-B9100U/SH-B9100UT

COMMERCIAL UPRIGHT BIKE

Resistance System: Electromagnetic Resistance

Resistance Levels: 40 levels

Heart Rate: Hand-grip Heart Rate

Max User Weight: 180 kg / 397 lbs

Dimensions:
1123 × 675 × 1506 mm
44 × 27 × 59 in

Net Weight: 79 kg / 174 lbs
Gross Weight: 100 kg / 219 lbs

SH-B9100UT
15.6\"/>


SH-S8901

Stair Climber **NEW**

Step Up to the Future – The All-New SHUA Fitness Stair Climber: Innovation Powers Every Step, Maximizes Engagement, and Redefines Cardio Excellence.



SH-S8901

STAIR CLIMBER

Resistance System: Electromagnetic Resistance

Resistance Levels: 40 levels

Heart Rate: Hand-grip Heart Rate

Max User Weight: 180 kg / 397 lbs

Dimensions:

1357 × 905 × 2230 mm

53 x 36 x 88 in

Net Weight: 154 kg / 339 lbs

Gross Weight: 200 kg / 441 lbs



Dual Water Bottle Holders



Wireless Charging Module



iPad Stand





SH-T8919/SH-T8919T

COMMERCIAL TREADMILL

Drive System:

6.0 HP AC Dynamic Response Drive System

Speed Range: 0.8 - 20 km/h / 0.5 - 12.4 mph

Incline Range: -3 - 15%

Heart Rate:

Hand-grip Heart Rate

Wireless Heart Rate

Running Surface Area:

580 × 1570 mm / 23 × 62 in

Max User Weight: 180 kg / 397 lbs

Dimensions(L×W×H):

2190 × 970 × 1600 mm

86 × 38 × 63 in

Net Weight: 191 kg / 421 lbs

Gross Weight: 243 kg / 536 lbs



SH-T8919T
15.6" Touch Screen



SH-T8919
15.6" LED

SH-T850T

COMMERCIAL TREADMILL

Drive System:

5.0 HP AC Dynamic Response Drive System

Speed Range: 1.0 - 20 km/h / 0.6 - 12.4 mph

Incline Range: 0% - 15%

Heart Rate:

Hand-grip Heart Rate

Wireless Heart Rate

Running Surface Area:

520 × 1450 mm / 20 × 57 in

Max User Weight: 150 kg / 331 lbs

Dimensions(L×W×H):

1960 × 850 × 1573 mm

77 × 33 × 62 in

Net Weight: 135 kg / 298 lbs

Gross Weight: 158 kg / 348 lbs



SH-T850T
21.5" Touch Screen

SH-T8919T22

COMMERCIAL TREADMILL

Drive System:

6.0 HP AC Dynamic Response Drive System

Speed Range: 0.8 - 20 km/h / 0.5 - 12.4 mph

Incline Range: -3 - 15%

Heart Rate:

Hand-grip Heart Rate

Wireless Heart Rate

Running Surface Area:

580 × 1570 mm / 23 × 62 in

Max User Weight: 180 kg / 397 lbs

Dimensions(L×W×H):

2190 × 970 × 1600 mm

86 × 38 × 63 in

Net Weight: 191 kg / 421 lbs

Gross Weight: 243 kg / 536 lbs



SH-T8919T22
21.5" Touch Screen

SH-T6500S

COMMERCIAL TREADMILL

Drive System:

5.0 HP AC Dynamic Response Drive System

Speed Range: 1.0 - 20 km/h / 0.6 - 12.4 mph

Incline Range: 0% - 15%

Heart Rate:

Hand-grip Heart Rate

Wireless Heart Rate

Running Surface Area:

520 × 1450 mm / 20 × 57 in

Max User Weight: 145 kg / 320 lbs

Dimensions(L×W×H):

1960 × 850 × 1520 mm

77 × 33 × 60 in

Net Weight: 130 kg / 287 lbs

Gross Weight: 153 kg / 337 lbs



SH-T6500S
15.6" LED

SH-T860

COMMERCIAL TREADMILL

Drive System:

6.0 HP AC Dynamic Response Drive System

Speed Range: 1.0~20km/h / 0.6~12.4 mph

Incline Range: -3 - 15%

Heart Rate:

Hand-grip Heart Rate

Wireless Heart Rate

Running Surface Area:

580 × 1570 mm / 23 × 62 in

Max User Weight: 180 kg / 397 lbs

Dimensions(L×W×H):

2190 × 960 × 1580 mm

86 × 38 × 62 in

Net Weight: 198 kg / 437 lbs

Gross Weight: 247 kg / 545 lbs



SH-T5918

COMMERCIAL TREADMILL

Drive System:

6.0 HP AC Dynamic Response Drive System

Speed Range: 0.8~20km/h / 0.5~12.4 mph

Incline Range: -3% - 15%

Heart Rate:

Hand-grip Heart Rate

Wireless Heart Rate

Running Surface Area:

580 × 1570 mm / 23 × 62 in

Max User Weight: 180 kg / 397 lbs

Dimensions(L×W×H):

2190 × 960 × 1580 mm

86 × 38 × 62 in

Net Weight: 198 kg / 437 lbs

Gross Weight: 247 kg / 545 lbs



SH-T860T

COMMERCIAL TREADMILL

Drive System:

6.0 HP AC Dynamic Response Drive System

Speed Range: 1.0~20km/h / 0.6~12.4 mph

Incline Range: -3 - 15%

Heart Rate:

Hand-grip Heart Rate

Wireless Heart Rate

Running Surface Area:

580 × 1570 mm / 23 × 62 in

Max User Weight: 180 kg / 397 lbs

Dimensions(L×W×H):

2190 × 960 × 1580 mm

86 × 38 × 62 in

Net Weight: 198 kg / 437 lbs

Gross Weight: 247 kg / 545 lbs



SH-T860T
15.6" Touch Screen

SH-T8700

COMMERCIAL TREADMILL

Drive System:

5.0 HP AC Dynamic Response Drive System

Speed Range: 1.0 - 20 km/h / 0.6 - 12.4 mph

Incline Range: 0% - 15%

Heart Rate:

Hand-grip Heart Rate

Wireless Heart Rate

Running Surface Area:

520 × 1450 mm / 20 × 57 in

Max User Weight: 150 kg / 331 lbs

Dimensions(L×W×H):

2030 × 910 × 1530 mm

80 × 36 × 60 in

Net Weight: 136.5 kg / 301 lbs

Gross Weight: 168.5 kg / 372 lbs



UNLEASH YOUR POWER WITH THE SELF-POWERED CURVED TREADMILL

Eco-Friendly – No electricity, fully powered by you.

Full-Body Workout – Engage every muscle with each stride.

Adjustable Intensity – Control your speed, fit for all levels.

Low Impact, High Burn – Easy on joints, tough on calories.

Curved Design – Promotes natural stride, full speed control, and pure athlete-driven performance.



SH-T901Z

SELF-POWERED CURVED TREADMILL

Magnetic Resistance: 8 levels

Heart Rate:

Wireless Heart Rate

Running Surface Area:

480 × 1500 mm / 19 × 59 in

Max User Weight: 180 kg / 397 lbs

Dimensions(L×W×H):

2343 × 964 × 1525 mm

92 × 38 × 60 in

Net Weight: 182 kg / 400 lbs

Gross Weight: 239 kg / 527 lbs



SH-E800

COMMERCIAL ELLIPTICAL

Resistance System: Electromagnetic Resistance

Resistance Levels: 32 levels

Heart Rate: Hand-grip Heart Rate

Max User Weight: 160 kg / 353 lbs

Dimensions:

1900 × 850 × 1760 mm

75 × 33 × 69 in

Net Weight: 130 kg / 287 lbs

Gross Weight: 150 kg / 330 lbs



SH-B8860SL

COMMERCIAL SPINNING BIKE

Fly Wheel: 23 kg / 51 lbs

Display Console : LCD

Resistance System:

Electromagnetic Resistance System

Max User Weight: 150 kg / 331 lbs

Dimensions(L×W×H):

1210 × 540 × 1200 mm

48 × 21 × 47 in



SH-R8100

COMMERCIAL ROWER

Resistance System:

Magnetic Resistance + Air Resistance

Resistance Levels: 16 levels

Max User Weight: 150 kg / 331 lbs

Dimensions(L×W×H):

2415 × 545 × 840 mm

95 × 21 × 33 in

Net Weight: 48 kg / 106 lbs

Gross Weight: 51 kg / 111 lbs



SH-R8800

COMMERCIAL ROWER

Resistance System:

Magnetic Resistance + Air Resistance

Resistance Levels: 20 levels

Max User Weight: 180 kg / 397 lbs

Dimensions(L×W×H):

2400 × 490 × 1100 mm

94 × 19 × 43 in

Net Weight: 60 kg / 132 lbs

Gross Weight: 68 kg / 150 lbs





STRENGTH

SHUA offers a comprehensive strength series that includes selectorized and plate-loaded equipment. Covering both upper and lower body exercises, it provides every trainer with an unparalleled strength training experience.



Unleash the extraordinary with SHUA's 88 Series, where cutting-edge ergonomic design, advanced intelligence, and innovative craftsmanship converge seamlessly. Meticulously tailored for premium fitness facility, ensuring an unparalleled fitness experience for members demanding the very best.



Optimal Ergonomics

Developed by the SHUA R&D team in collaboration with world-class bodybuilding champions, the 88 Series represents a pinnacle in the autonomous design of professional-grade training equipment.



Innovative Craftsmanship

Leading the industry with advanced laser engraving technology on the surface of plastic components. Each texture undergoes over 30 meticulous engravings, creating a refined finish that's visually stunning and tactile. Combined with sleek black titanium and brushed silver, it elevates your fitness facility to a premium level.

88 SERIES



Silver



Black

SH-G8801

CHEST PRESS

Dimensions:

1376 x 1266 x 1356 mm

54 x 50 x 53 in

Net Weight:

305 kg / 672 lbs

Gross Weight:

382 kg / 842 lbs

Weight Stack:

120 kg / 265 lbs



SH-G8803

LAT PULLDOWN

Dimensions:

1525 x 1300 x 1910 mm

60 x 51 x 75 in

Net Weight:

295 kg / 650 lbs

Gross Weight:

382 kg / 842 lbs

Weight Stack:

110 kg / 243 lbs



SH-G8802

SHOULDER PRESS

Dimensions:

1464 x 1411 x 1350 mm

58 x 56 x 53 in

Net Weight:

298 kg / 657 lbs

Gross Weight:

392 kg / 864 lbs

Weight Stack:

100 kg / 221 lbs



SH-G8804

LOW ROW

Dimensions:

1385 x 1285 x 1350 mm

55 x 51 x 53 in

Net Weight:

280 kg / 617 lbs

Gross Weight:

365 kg / 805 lbs

Weight Stack:

120 kg / 265 lbs



SH-G8805

SEATED LEG PRESS

Dimensions:

1740 x 1040 x 1350 mm

69 x 41 x 53 in

Net Weight:

345 kg / 761 lbs

Gross Weight:

442 kg / 974 lbs

Weight Stack:

150 kg / 331 lbs



SH-G8806

LEG EXTENSION

Dimensions:

1300 x 1256 x 1352 mm

51 x 49 x 53 in

Net Weight:

282 kg / 622 lbs

Gross Weight:

368 kg / 811 lbs

Weight Stack:

100 kg / 221 lbs



SH-G8807

PRONE LEG CURL

Dimensions:

1656 x 1162 x 1350 mm

65 x 46 x 53 in

Net Weight:

255 kg / 562 lbs

Gross Weight:

336 kg / 741 lbs

Weight Stack:

90 kg / 198 lbs



SH-G8808

ABDUCTOR/ADDUCTOR

Dimensions:

1619 x 771 x 1350 mm

64 x 30 x 53 in

Net Weight:

336 kg / 741 lbs

Gross Weight:

429 kg / 946 lbs

Weight Stack:

120 kg / 265 lbs



SH-G8809

HIP THRUST

Dimensions:

1603 x 1153 x 1352 mm

63 x 45 x 53 in

Net Weight:

283 kg / 624 lbs

Gross Weight:

370 kg / 816 lbs

Weight Stack:

120 kg / 265 lbs



SH-G8812

BACK EXTENSION

Dimensions:

1290 x 1285 x 1350 mm

51 x 51 x 53 in

Net Weight:

259 kg / 571 lbs

Gross Weight:

338 kg / 745 lbs

Weight Stack:

90 kg / 198 lbs



SH-G8810

PECTORAL FLY/REAR DELTOID

Dimensions:

1520 x 1320 x 2010 mm

60 x 52 x 79 in

Net Weight:

295 kg / 650 lbs

Gross Weight:

382 kg / 842 lbs

Weight Stack:

100 kg / 221 lbs



SH-G8814

ABDOMINAL

Dimensions:

1350 x 1000 x 1710 mm

53 x 39 x 67 in

Net Weight:

300 kg / 661 lbs

Gross Weight:

377 kg / 831 lbs

Weight Stack:

100 kg / 221 lbs



SH-G8815

BICEPS CURL/TRICEPS PRESS

Dimensions:

1415 x 1100 x 1350 mm

56 x 43 x 53 in

Net Weight:

280 kg / 617 lbs

Gross Weight:

323 kg / 712 lbs

Weight Stack:

80 kg / 176 lbs



SH-G8818

SMITH MACHINE

Dimensions:

2188 x 1365 x 2287 mm

86 x 54 x 90 in

Net Weight:

246 kg / 542 lbs

Gross Weight:

310 kg / 683 lbs



SH-G8816

LEG CURL/EXTENSION

Dimensions:

1220 x 1200 x 1350 mm

48 x 47 x 53 in

Net Weight:

300 kg / 661 lbs

Gross Weight:

341 kg / 752 lbs

Weight Stack:

100 kg / 221 lbs



SH-G8820

FUNCTIONAL TRAINER

Dimensions:

940 x 1660 x 2240 mm

37 x 65 x 88 in

Net Weight:

395 kg / 871 lbs

Gross Weight:

445 kg / 981 lbs

Weight Stack:

2 x 100 kg / 2 x 221 lbs



SH-G8821

LATERAL RAISE

Dimensions:

1260 x 1110 x 1343 mm

50 x 44 x 53 in

Net Weight:

300 kg / 661 lbs

Gross Weight:

377 kg / 831 lbs

Weight Stack:

90 kg / 198 lbs



SH-G8823

ABDUCTOR

Dimensions:

1760 x 1687 x 1343 mm

69 x 66 x 53 in

Net Weight:

335 kg / 739 lbs

Gross Weight:

432 kg / 952 lbs

Weight Stack:

120 kg / 265 lbs



SH-G8822

ROTARY TORSO

Dimensions:

1326 x 1246 x 1343 mm

52 x 49 x 53 in

Net Weight:

244 kg / 537 lbs

Gross Weight:

333 kg / 732 lbs

Weight Stack:

80 kg / 176 lbs



SH-G8824

ADDUCTOR

Dimensions:

1765 x 1736 x 1343 mm

69 x 68 x 53 in

Net Weight:

335 kg / 739 lbs

Gross Weight:

432 kg / 952 lbs

Weight Stack:

120 kg / 265 lbs



SH-G8825

BICEPS CURL

Dimensions:

1530 x 1295 x 1343 mm

60 x 51 x 53 in

Net Weight:

258 kg / 569 lbs

Gross Weight:

332 kg / 732 lbs

Weight Stack:

90 kg / 198 lbs



SH-G8827

SEATED LEG CURL

Dimensions:

1220 x 1200 x 1350 mm

48 x 47 x 53 in

Net Weight:

300 kg / 661 lbs

Gross Weight:

341 kg / 752 lbs

Weight Stack:

100 kg / 221 lbs



SH-G8826

TRICEPS PRESS

Dimensions:

1232 x 1151 x 1343 mm

48 x 45 x 53 in

Net Weight:

280 kg / 617 lbs

Gross Weight:

370 kg / 816 lbs

Weight Stack:

120 kg / 265 lbs



SH-G8852

ADJUSTABLE CABLE CROSSOVER

Dimensions:

3775 x 925 x 2290 mm

149 x 36 x 90 in

Net Weight:

325 kg / 717 lbs

Gross Weight:

390 kg / 860 lbs

Weight Stack:

2 x 90 kg / 2 x 198 lbs



SH-G8854

SQUAT RACK

Dimensions:

1840 x 1670 x 1840 mm

72 x 66 x 72 in

Net Weight:

85 kg / 187 lbs

Gross Weight:

92 kg / 203 lbs



SH-G8856

OLYMPIC WEIGHT TREE

Dimensions:

806 x 707 x 937 mm

32 x 28 x 37 in

Net Weight:

19 kg / 42 lbs

Gross Weight:

23 kg / 51 lbs



SH-G8855

ADJUSTABLE DUMBBELL BENCH

Dimensions:

1660 x 600 x 440 mm

65 x 24 x 17 in

Net Weight:

48 kg / 106 lbs

Gross Weight:

53 kg / 117 lbs



SH-G8858

BACK EXTENSION BENCH

Dimensions:

1175 x 805 x 800 mm

46 x 32 x 32 in

Net Weight:

43 kg / 95 lbs

Gross Weight:

65 kg / 143 lbs



SH-G8859

ARM CURL BENCH

Dimensions:

1095 x 800 x 970 mm

43 x 32 x 38 in

Net Weight:

51 kg / 112 lbs

Gross Weight:

61 kg / 135 lbs



SH-G8876

UTILITY BENCH

Dimensions:

873 x 507 x 883 mm

34 x 20 x 35 in

Net Weight:

19 kg / 42 lbs

Gross Weight:

23 kg / 51 lbs



SH-G8871

OLYMPIC FLAT BENCH

Dimensions:

1700 x 1585 x 1185 mm

67 x 62 x 47 in

Net Weight:

60 kg / 132 lbs

Gross Weight:

67 kg / 148 lbs



SH-G8878

FLAT BENCH

Dimensions:

1605 x 607 x 400 mm

63 x 24 x 16 in

Net Weight:

31 kg / 68 lbs

Gross Weight:

37 kg / 82 lbs



SH-G8879

ADJUSTABLE DECLINE BENCH

Dimensions:

(1620–1789) x 705 x (930–1190) mm

(64–70) x 28 x (37–47) in

Net Weight:

39 kg / 86 lbs

Gross Weight:

47 kg / 104 lbs



SH-G8883

BARBELL RACK

Dimensions:

860 x 765 x 1450 mm

34 x 30 x 57 in

Net Weight:

82 kg / 181 lbs

Gross Weight:

87 kg / 192 lbs



SH-G8884

TWO TIER DUMBBELL RACK

Dimensions:

2756 x 685 x 890 mm

109 x 27 x 35 in

Net Weight:

95 kg / 209 lbs

Gross Weight:

99 kg / 218 lbs



SH-G8888

CHIN DIP LEG RAISE STATION

Dimensions:

1310 x 1170 x 2165 mm

52 x 46 x 85 in

Net Weight:

125 kg / 276 lbs

Gross Weight:

170 kg / 375 lbs





SH-G8890

STRETCHER

Dimensions:

1400 x 690 x 1200 mm

55 x 27 x 47 in

Net Weight:

35 kg / 77 lbs

Gross Weight:

40 kg / 88 lbs





77 SERIES

77 series unveils a groundbreaking fusion of selectorized and plate-loaded dual-weight systems, seamlessly integrated into an eye-catching X-shaped design. Crafted to meet the diverse needs of both starters and seasoned athletes, the 77 Series stands as a testament to cutting-edge engineering and uncompromising performance.



Dual-Weight Systems

Featuring a pioneering combination of selectorized and plate-loaded dual-weight systems, coupled with a split-type design that allows for unilateral training.



X-Shaped Innovative Design

Distinguished by its unmistakable X-shaped silhouette, the 77 Series combines a stylish aesthetic with enhanced stability, making your gym stand out from the crowd.

SH-G7701

HYBRID CHEST PRESS

Dimensions:

1690 x 1840 x 1740 mm

67 x 72 x 69 in

Net Weight:

323 kg / 712 lbs

Gross Weight:

365 kg / 805 lbs

Weight Stack:

100 kg / 220 lbs



SH-G7703

HYBRID LAT PULLDOWN

Dimensions:

1525 x 1420 x 1980 mm

60 x 56 x 78 in

Net Weight:

200 kg / 441 lbs

Gross Weight:

250 kg / 551 lbs

Weight Stack:

100 kg / 220 lbs



SH-G7702

HYBRID PECTORAL FLY

Dimensions:

1800 x 1950 x 1480 mm

71 x 77 x 58 in

Net Weight:

285 kg / 628 lbs

Gross Weight:

320 kg / 706 lbs

Weight Stack:

80 kg / 176 lbs



SH-G7704

HYBRID SEATED ROW TRAINER

Dimensions:

1495 x 1425 x 1930 mm

59 x 56 x 76 in

Net Weight:

289 kg / 637 lbs

Gross Weight:

360 kg / 794 lbs

Weight Stack:

100 kg / 220 lbs



SH-G7705

HYBRID SHOULDER PRESS

Dimensions:

1895 x 1635 x 1480 mm

75 x 64 x 58 in

Net Weight:

305 kg / 672 lbs

Gross Weight:

350 kg / 772 lbs

Weight Stack:

80 kg / 176 lbs



SH-G7707

HYBRID LEG PRESS

Dimensions:

1525 x 1680 x 1480 mm

60 x 66 x 58 in

Net Weight:

310 kg / 683 lbs

Gross Weight:

370 kg / 816 lbs

Weight Stack:

90 kg / 198 lbs



SH-G7706

HYBRID LATERAL RAISE

Dimensions:

1200 x 1510 x 1480 mm

47 x 59 x 58 in

Net Weight:

205 kg / 452 lbs

Gross Weight:

240 kg / 529 lbs

Weight Stack:

80 kg / 176 lbs



SH-G7708

HYBRID LEG EXTENSION

Dimensions:

1600 x 1030 x 1480 mm

63 x 41 x 58 in

Net Weight:

251 kg / 553 lbs

Gross Weight:

300 kg / 661 lbs

Weight Stack:

100 kg / 220 lbs



SH-G7709

HYBRID PRONE LEG CURL

Dimensions:

1670 x 1295 x 1480 mm

66 x 51 x 58 in

Net Weight:

243 kg / 536 lbs

Gross Weight:

278 kg / 613 lbs

Weight Stack:

100 kg / 220 lbs



SH-G7710

HYBRID REAR KICK

Dimensions:

1350 x 1030 x 1480 mm

53 x 41 x 58 in

Net Weight:

230 kg / 507 lbs

Gross Weight:

260 kg / 573 lbs

Weight Stack:

80 kg / 176 lbs



**PUSH LIMITS,
UNLOCK POTENTIAL**

69 SERIES

69 Plate-loaded Series, where ergonomic design, top-tier durability, and unmatched user experience converge seamlessly. Designed for individuals seeking to push their limits and achieve a higher level of strength training.



Optimized Muscle Activation

With exceptional human biomechanical design, 69 Series offers the perfect movement trajectory and distribution of resistance, maximizing muscle activation.



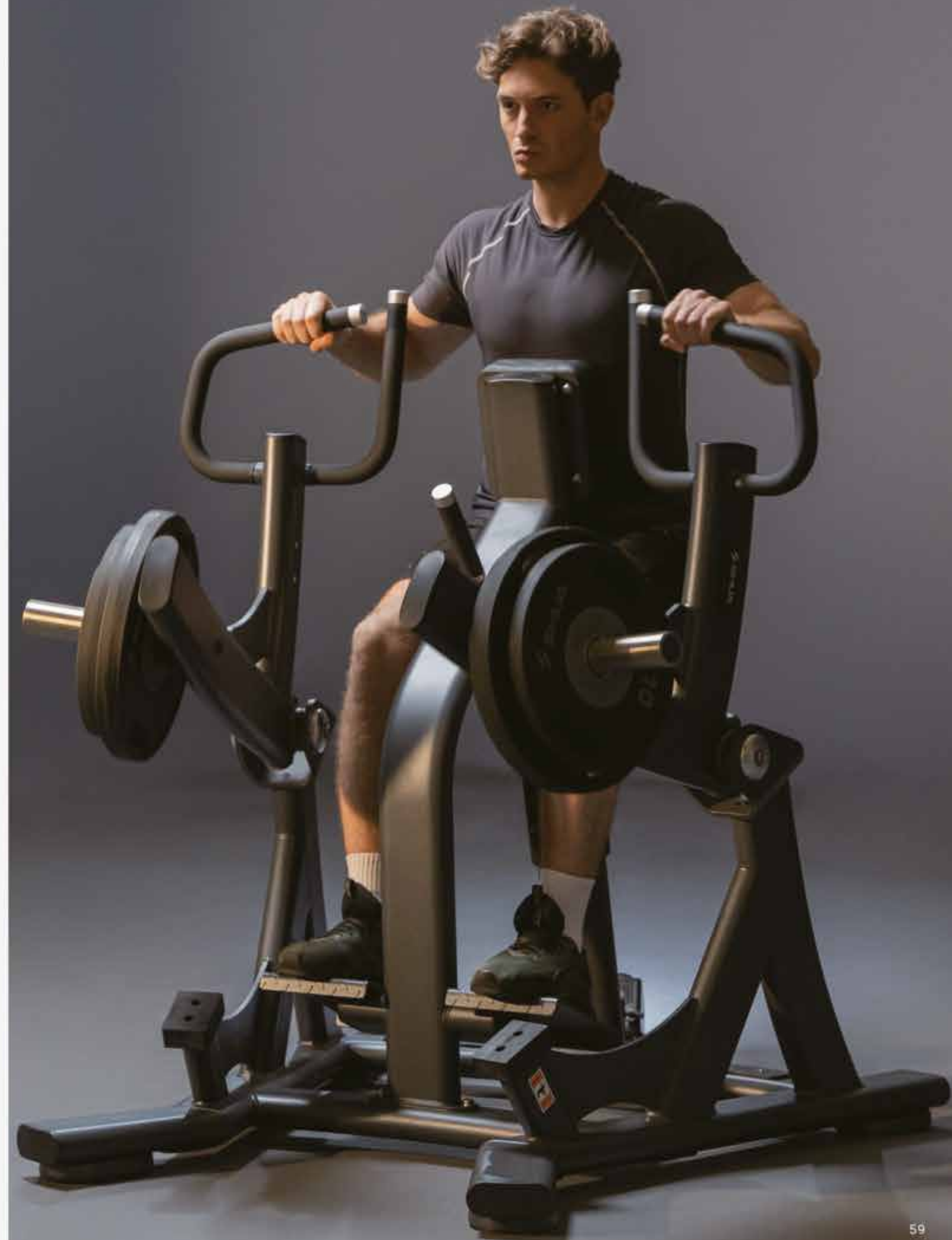
Precision Manufacturing

69 Series is crafted with meticulous precision, guaranteeing stability and safety throughout the exercise trajectory, delivering the ultimate strength training experience for users.



User-friendly Design

Products in the 69 series are designed with cleverly integrated features, prioritizing user experience to ensure exercisers enjoy a comfortable and efficient workout.



SH-G6901

ISO-LATERAL CHEST PRESS

Dimensions:

1770 x 1450 x 1935 mm

70 x 57 x 76 in

Net Weight:

200 kg / 441 lbs

Gross Weight:

235 kg / 518 lbs



SH-G6903

ISO-LATERAL LAT PULLDOWN

Dimensions:

1560 x 1530 x 1880 mm

61 x 60 x 74 in

Net Weight:

145 kg / 320 lbs

Gross Weight:

165 kg / 364 lbs



SH-G6902

ISO-LATERAL LEVERAGE DECLINE CHEST PRESS

Dimensions:

1840 x 1555 x 1290 mm

72 x 61 x 51 in

Net Weight:

120 kg / 265 lbs

Gross Weight:

145 kg / 320 lbs



SH-G6904

ISO-LATERAL ROW

Dimensions:

1299 x 1160 x 1219 mm

51 x 46 x 48 in

Net Weight:

130 kg / 287 lbs

Gross Weight:

178 kg / 392 lbs



SH-G6905

ISO-LATERAL SHOULDER PRESS

Dimensions:

1920 x 1385 x 1315 mm

76 x 55 x 52 in

Net Weight:

157 kg / 346 lbs

Gross Weight:

202 kg / 445 lbs



SH-G6907

ISO-LATERAL TRICEPS PRESS

Dimensions:

1310 x 1170 x 1170 mm

52 x 46 x 46 in

Net Weight:

111 kg / 245 lbs

Gross Weight:

151 kg / 333 lbs



SH-G6906

ISO-LATERAL BICEPS CURL

Dimensions:

1985 x 1195 x 1135 mm

78 x 47 x 45 in

Net Weight:

101 kg / 223 lbs

Gross Weight:

141 kg / 311 lbs



SH-G6908

ISO-LATERAL LEG EXTENSION

Dimensions:

1480 x 1415 x 1075 mm

58 x 56 x 42 in

Net Weight:

105 kg / 231 lbs

Gross Weight:

135 kg / 298 lbs



SH-G6909

ISO-LATERAL KNEELING LEG CURL

Dimensions:

1515 x 1205 x 1390 mm

60 x 47 x 55 in

Net Weight:

109 kg / 240 lbs

Gross Weight:

145 kg / 320 lbs



SH-G6911

REAR KICK

Dimensions:

1435 x 1210 x 1560 mm

57 x 48 x 61 in

Net Weight:

90 kg / 198 lbs

Gross Weight:

110 kg / 243 lbs



SH-G6910

SEATED CALF RAISE

Dimensions:

1560 x 575 x 990 mm

61 x 23 x 39 in

Net Weight:

60 kg / 132 lbs

Gross Weight:

75 kg / 165 lbs



SH-G6912

STRETCHER

Dimensions:

1885 x 1145 x 1045 mm

74 x 45 x 41 in

Net Weight:

95 kg / 209 lbs

Gross Weight:

109 kg / 240 lbs



SH-G6913

V SQUAT

Dimensions:

1760 x 1445 x 1620 mm

69 x 57 x 64 in

Net Weight:

174 kg / 384 lbs

Gross Weight:

220 kg / 485 lbs



SH-G6915

ABDOMINAL OBLIQUE CRUNCH

Dimensions:

1420 x 1150 x 1720 mm

56 x 45 x 68 in

Net Weight:

125 kg / 276 lbs

Gross Weight:

150 kg / 331 lbs



SH-G6914

LINEAR HACK PRESS

Dimensions:

1650 x 1050 x 1160 mm

65 x 41 x 46 in

Net Weight:

190 kg / 419 lbs

Gross Weight:

240 kg / 529 lbs



SH-G6916

MULTI-FUNCTIONAL STRETCH TRAINER

Dimensions:

1980 x 1100 x 630 mm

78 x 43 x 25 in

Net Weight:

200 kg / 441 lbs

Gross Weight:

250 kg / 551 lbs



**BREAK THROUGH YOUR LIMITS
UNLOCK YOUR POTENTIAL**



89 SERIES

89 series encompasses both free weight and plate-loaded equipment, meticulously developed to meet high-intensity functional and strength training needs of professional athletes, military personnel, and elite trainers.



Optimal Muscle Engagement

Various plate-loaded products in the 89 Series incorporate designs such as split-type designs and multiple grips. These designs are engineered to assist trainers in achieving targeted and comprehensive muscle activation.



Unparalleled Quality

Crafted from premium-grade steel and rigorously tested beyond industry standards by 7 to 10 times, each product in the 89 Series is engineered to withstand the toughest of workouts.

SH-G8901

HALF RACK

Dimensions:

1510 x 1675 x 2465 mm

59 x 66 x 97 in

Net Weight:

210 kg / 463 lbs

Gross Weight:

236 kg / 520 lbs



SH-G8903

COMPREHENSIVE POWER RACK

Dimensions:

2940 x 1680 x 2465 mm

1160 x 660 x 970 in

Net Weight:

595 kg / 1312 lbs

Gross Weight:

624 kg / 1375 lbs

Weight Stack:

2 x 97 kg / 2 x 214 lbs



SH-G8902

POWER RACK

Dimensions:

2010 x 1770 x 2465 mm

79 x 70 x 97 in

Net Weight:

315 kg / 694 lbs

Gross Weight:

345 kg / 760 lbs



SH-Q8901/Q8902/Q8903

WEIGHTLIFTING PLATFORM (40MM/80MM)

Rubber Pads:

500 x 500 x 30 mm

20 x 20 x 1 in

500 x 250 x 30 mm

20 x 10 x 1 in

Beech Boards:

2000 x 1000 x 40 mm / 2000 x 1000 x 80 mm

79 x 39 x 2 in / 79 x 39 x 3 in

1840 x 1122 x 40 mm / 1840 x 1122 x 80 mm

72 x 44 x 2 in / 72 x 44 x 3 in

2000 x 750 x 50 mm (2 pieces) / 2000 x 750 x 50 mm (2 pieces)

79 x 30 x 2 in (2 pieces) / 79 x 30 x 2 in (2 pieces)



SH-G8904

PUSH SLED

Dimensions:

1165 x 820 x 965 mm

45 x 32 x 38 in

Net Weight:

43 kg / 95 lbs

Gross Weight:

49 kg / 108 lbs



SH-G8906

FLAT DUMBBELL RACK

Dimensions:

1300 x 860 x 820 mm

51 x 34 x 32 in

Net Weight:

82 kg / 181 lbs

Gross Weight:

89 kg / 196 lbs



SH-G8905

KETTLEBELL RACK

Dimensions:

2510 x 644 x 726 mm

99 x 25 x 29 in

Net Weight:

88 kg / 194 lbs

Gross Weight:

95 kg / 210 lbs



SH-G8909

LUNGE MACHINE

Dimensions:

725 x 665 x 515 mm

29 x 26 x 20 in

Net Weight:

17 kg / 39 lbs

Gross Weight:

21 kg / 46 lbs



SH-G8911

GROUND BASE JAMMER

Dimensions:

1885 x 1445 x 2230 mm

74 x 57 x 88 in

Net Weight:

180 kg / 397 lbs

Gross Weight:

265 kg / 584 lbs



SH-G8913

ISO-LATERAL SHOULDER PRESS

Dimensions:

2130 x 1210 x 2100 mm

84 x 48 x 83 in

Net Weight:

253 kg / 558 lbs

Gross Weight:

313 kg / 690 lbs



SH-G8912

ISO-LATERAL CHEST PRESS

Dimensions:

1435 x 1750 x 2090 mm

57 x 69 x 82 in

Net Weight:

235 kg / 518 lbs

Gross Weight:

295 kg / 650 lbs



SH-G8914

SQUAT LUNGE

Dimensions:

1655 x 1620 x 770 mm

65 x 64 x 30 in

Net Weight:

116 kg / 256 lbs

Gross Weight:

154 kg / 339 lbs



SH-G8919

ISO-LATERAL LINEAR LEG PRESS

Dimensions:

2580 x 1420 x 1480 mm

102 x 56 x 58 in

Net Weight:

540 kg / 1190 lbs

Gross Weight:

620 kg / 1367 lbs



SH-G8924

GLUTE HAM BENCH

Dimensions:

1600 x 1030 x 1260 mm

63 x 41 x 50 in

Net Weight:

208 kg / 458 lbs

Gross Weight:

245 kg / 540 lbs



SH-G8923

LEG CURL

Dimensions:

1785 x 615 x 655 mm

70 x 24 x 26 in

Net Weight:

58 kg / 128 lbs

Gross Weight:

81 kg / 178 lbs



SH-G8925

MULTIFUNCTIONAL PLANE DEVELOPER

Dimensions:

1765 x 1400 x 800 mm

69 x 55 x 32 in

Net Weight:

91 kg / 200 lbs

Gross Weight:

125 kg / 275 lbs



SH-G8926

SEAL ROW BENCH

Dimensions:

1776 x 1287 x 1084 mm

70 x 51 x 43 in

Net Weight:

170 kg / 375 lbs

Gross Weight:

209 kg / 460 lbs



SH-G8928

GLUTE TRAINER

Dimensions:

1791 x 1562 x 807 mm

71 x 62 x 32 in

Net Weight:

189 kg / 417 lbs

Gross Weight:

212 kg / 467 lbs



SH-G8927

ISO-LATERAL LAT PULLDOWN

Dimensions:

1750 x 1620 x 2140 mm

69 x 64 x 84 in

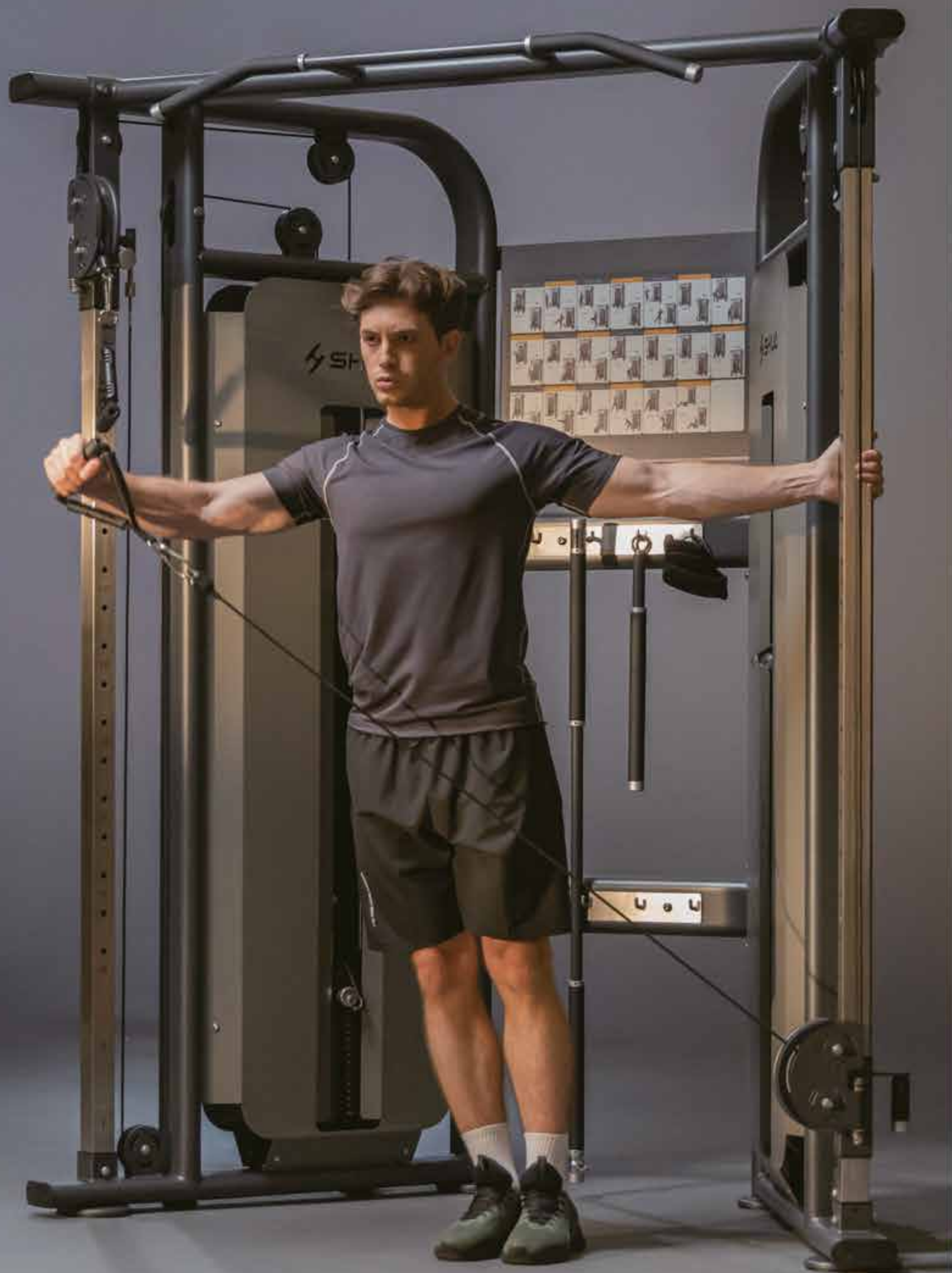
Net Weight:

208 kg / 458 lbs

Gross Weight:

258 kg / 569 lbs





68 SERIES

68 Series integrates user-friendliness, space-saving design, exceptional durability, and ergonomic excellence, which is perfect for beginners who just embarking on their strength training journey.



Space-saving Design

Every product of 68 Series is crafted with a compact, space-saving design. Even in the limited space of your fitness facility, you can still discover a multitude of unparalleled equipment layout options that go beyond your expectations.



Unmatched Durability

68 Series is meticulously crafted from high-quality alloys and steel, which could withstand the rigorous demands of daily use.



Craftsmanship Excellence

68 Series exemplifies our dedication to superior craftsmanship by seamlessly integrating advanced welding techniques, ensuring optimal safety, stability, and enhanced visual appeal in our products.

SH-G6801

CHEST PRESS

Dimensions:

1470 x 1380 x 1850 mm

57 x 54 x 73 in

Net Weight:

240 kg / 529 lbs

Gross Weight:

301 kg / 663 lbs

Weight Stack:

90 kg / 198 lbs



SH-G6802

PECTORAL FLY

Dimensions:

1350 x 1345 x 1545 mm

53 x 53 x 61 in

Net Weight:

237 kg / 522 lbs

Gross Weight:

295 kg / 650 lbs

Weight Stack:

90 kg / 198 lbs



SH-G6805

LATERAL RAISE

Dimensions:

1286 x 1130 x 1545 mm

51 x 44 x 61 in

Net Weight:

215 kg / 474 lbs

Gross Weight:

270 kg / 595 lbs

Weight Stack:

80 kg / 176 lbs



SH-G6806

LAT PULLDOWN

Dimensions:

1410 x 1160 x 1880 mm

56 x 46 x 74 in

Net Weight:

220 kg / 485 lbs

Gross Weight:

280 kg / 617 lbs

Weight Stack:

90 kg / 198 lbs



SH-G6803

SEATED ROWING

Dimensions:

1505 x 1160 x 1545 mm

59 x 46 x 61 in

Net Weight:

225 kg / 496 lbs

Gross Weight:

275 kg / 606 lbs

Weight Stack:

90 kg / 198 lbs



SH-G6804

SHOULDER PRESS

Dimensions:

1560 x 1350 x 1545 mm

61 x 53 x 61 in

Net Weight:

265 kg / 584 lbs

Gross Weight:

355 kg / 783 lbs

Weight Stack:

90 kg / 198 lbs



SH-G6807

BICEPS CURL

Dimensions:

1585 x 1305 x 770 mm

62 x 51 x 30 in

Net Weight:

188 kg / 414 lbs

Gross Weight:

246 kg / 542 lbs

Weight Stack:

60 kg / 132 lbs



SH-G6808

TRICEPS PRESS

Dimensions:

1195 x 1130 x 1545 mm

47 x 44 x 61 in

Net Weight:

208 kg / 458 lbs

Gross Weight:

245 kg / 540 lbs

Weight Stack:

90 kg / 198 lbs



SH-G6809

SEATED LEG PRESS

Dimensions:

1770 x 1160 x 1545 mm

70 x 46 x 61 in

Net Weight:

255 kg / 562 lbs

Gross Weight:

330 kg / 727 lbs

Weight Stack:

90 kg / 198 lbs



SH-G6810

LEG EXTENSION

Dimensions:

1206 x 1121 x 1545 mm

47 x 44 x 61 in

Net Weight:

235 kg / 518 lbs

Gross Weight:

305 kg / 672 lbs

Weight Stack:

100 kg / 220 lbs



SH-G6815

REAR KICK

Dimensions:

1206 x 1096 x 1545 mm

47 x 43 x 61 in

Net Weight:

167 kg / 368 lbs

Gross Weight:

215 kg / 474 lbs

Weight Stack:

60 kg / 132 lbs



SH-G6816

ABDOMINAL

Dimensions:

1440 x 1050 x 1688 mm

57 x 41 x 66 in

Net Weight:

275 kg / 606 lbs

Gross Weight:

345 kg / 761 lbs

Weight Stack:

100 kg / 220 lbs



SH-G6812

PRONE LEG CURL

Dimensions:

1595 x 1100 x 1545 mm

63 x 43 x 61 in

Net Weight:

216 kg / 476 lbs

Gross Weight:

255 kg / 562 lbs

Weight Stack:

100 kg / 220 lbs



SH-G6813

PECTORAL FLY/REAL DELTOID

Dimensions:

1210 x 940 x 2045 mm

48 x 37 x 81 in

Net Weight:

242 kg / 533 lbs

Gross Weight:

290 kg / 639 lbs

Weight Stack:

100 kg / 220 lbs



SH-G6817

BACK EXTENSION

Dimensions:

1460 x 985 x 1545 mm

57 x 39 x 61 in

Net Weight:

211 kg / 465 lbs

Gross Weight:

270 kg / 595 lbs

Weight Stack:

90 kg / 198 lbs



SH-G6818

TORSO ROTATION

Dimensions:

1530 x 1340 x 1545 mm

60 x 53 x 61 in

Net Weight:

200 kg / 441 lbs

Gross Weight:

245 kg / 540 lbs

Weight Stack:

80 kg / 176 lbs



SH-G6819

ABDUCTOR/ADDUCTOR

Dimensions:

1325 x 1330 x 1545 mm

52 x 52 x 61 in

Net Weight:

240 kg / 529 lbs

Gross Weight:

295 kg / 650 lbs

Weight Stack:

90 kg / 198 lbs



SH-G6820

FUNCTIONAL TRAINER

Dimensions:

940 x 1660 x 2240 mm

37 x 65 x 88 in

Net Weight:

395 kg / 871 lbs

Gross Weight:

445 kg / 981 lbs

Weight Stack:

2 x 100 kg / 2 x 220 lbs



SH-G6823

SEATED LEG CURL/EXTENSION

Dimensions:

1300 x 1090 x 1545 mm

51 x 43 x 61 in

Net Weight:

285 kg / 628 lbs

Gross Weight:

345 kg / 761 lbs

Weight Stack:

100 kg / 220 lbs



SH-G6824

SHOULDER PRESS/UPPER CHEST

Dimensions:

1872 x 1263 x 1544 mm

74 x 50 x 61 in

Net Weight:

235 kg / 518 lbs

Gross Weight:

295 kg / 650 lbs

Weight Stack:

90 kg / 198 lbs



SH-G6821

HIP THRUST BENCH

Dimensions:

1898 x 1206 x 445 mm

75 x 48 x 18 in

Net Weight:

120 kg / 265 lbs

Gross Weight:

170 kg / 375 lbs



SH-G6822

SEATED BICEPS CURL/TRICEPS PRESS

Dimensions:

1385 x 1020 x 1545 mm

55 x 40 x 61 in

Net Weight:

190 kg / 419 lbs

Gross Weight:

235 kg / 518 lbs

Weight Stack:

60 kg / 132 lbs



SH-G6825

MULTI-FUNCTIONAL TRAINER

Dimensions:

2074 x 1931 x 2327 mm

81 x 76 x 92 in

Net Weight:

425 kg / 937 lbs

Gross Weight:

505 kg / 1113 lbs

Weight Stack:

2 x 100 kg / 2 x 220 lbs



SH-G6851

ASSIST DIP/CHIN

Dimensions:

1425 x 935 x 2375 mm

56 x 37 x 94 in

Net Weight:

310 kg / 683 lbs

Gross Weight:

365 kg / 805 lbs

Weight Stack:

135 kg / 298 lbs



SH-G6852

ADJUSTABLE CABLE CROSSOVER

Dimensions:

3775 x 925 x 2290 mm

149 x 36 x 90 in

Net Weight:

345 kg / 761 lbs

Gross Weight:

395 kg / 871 lbs

Weight Stack:

2 x 90 kg / 2 x 198 lbs



SH-G6853

SMITH MACHINE

Dimensions:

2185 x 1535 x 2485 mm

86 x 60 x 98 in

Net Weight:

150 kg / 331 lbs

Gross Weight:

180 kg / 397 lbs



SH-G6856

OLYMPIC WEIGHT TREE

Dimensions:

810 x 791 x 983 mm

32 x 31 x 39 in

Net Weight:

19 kg / 42 lbs

Gross Weight:

23 kg / 51 lbs



SH-G6857

ADJUSTABLE BENCH

Dimensions:

1362 x 620 x 440 mm

54 x 24 x 17 in

Net Weight:

40 kg / 88 lbs

Gross Weight:

45 kg / 99 lbs



SH-G6854

SQUAT RACK

Dimensions:

1840 x 1670 x 1840 mm

72 x 66 x 72 in

Net Weight:

85 kg / 187 lbs

Gross Weight:

92 kg / 203 lbs



SH-G6855

ADJUSTABLE DUMBBELL BENCH

Dimensions:

1660 x 600 x 440 mm

65 x 24 x 17 in

Net Weight:

48 kg / 106 lbs

Gross Weight:

53 kg / 117 lbs



SH-G6858

BACK EXTENSION

Dimensions:

1175 x 805 x 800 mm

46 x 32 x 32 in

Net Weight:

43 kg / 95 lbs

Gross Weight:

65 kg / 143 lbs



SH-G6859

SEATED ARM CURL

Dimensions:

1095 x 800 x 970 mm

43 x 32 x 38 in

Net Weight:

51 kg / 112 lbs

Gross Weight:

61 kg / 134 lbs



SH-G6868

PULLEY ROW

Dimensions:

1830 x 990 x 1770 mm

72 x 39 x 70 in

Net Weight:

225 kg / 496 lbs

Gross Weight:

270 kg / 595 lbs

Weight Stack:

120 kg / 264 lbs



SH-G6871

OLYMPIC FLAT BENCH

Dimensions:

1206 x 1096 x 1545 mm

47 x 43 x 61 in

Net Weight:

48 kg / 106 lbs

Gross Weight:

55 kg / 120 lbs



SH-G6874

LINEAR LEG PRESS

Dimensions:

2050 x 1000 x 1469 mm

81 x 39 x 58 in

Net Weight:

200 kg / 441 lbs

Gross Weight:

220 kg / 485 lbs



SH-G6876

UTILITY BENCH

Dimensions:

875 x 507 x 882 mm

34 x 20 x 35 in

Net Weight:

18 kg / 40 lbs

Gross Weight:

22 kg / 47 lbs



SH-G6872

OLYMPIC DECLINE BENCH

Dimensions:

1800 x 1700 x 1185 mm

71 x 67 x 47 in

Net Weight:

66 kg / 146 lbs

Gross Weight:

74 kg / 163 lbs



SH-G6873

OLYMPIC INCLINE BENCH

Dimensions:

1700 x 1410 x 1360 mm

67 x 56 x 54 in

Net Weight:

64 kg / 140 lbs

Gross Weight:

70 kg / 154 lbs



SH-G6878

FLAT BENCH

Dimensions:

1605 x 607 x 400 mm

63 x 24 x 16 in

Net Weight:

23 kg / 51 lbs

Gross Weight:

29 kg / 64 lbs



SH-G6879

ADJUSTABLE ABDOMINAL BENCH

Dimensions:

(1620-1789) x 705 x (930-1190) mm

(64-70) x 28 x (37-47) in

Net Weight:

30 kg / 66 lbs

Gross Weight:

36 kg / 79 lbs



SH-G6883

BARBELL RACK

Dimensions:

860 x 765 x 1450 mm

34 x 30 x 57 in

Net Weight:

82 kg / 181 lbs

Gross Weight:

87 kg / 192 lbs



SH-G6884

TWO-TIER DUMBBELL RACK

Dimensions:

2756 x 685 x 890 mm

109 x 27 x 35 in

Net Weight:

95 kg / 209 lbs

Gross Weight:

99 kg / 218 lbs



SH-G6886

LEG RAISE

Dimensions:

1200 x 860 x 1550 mm

47 x 34 x 61 in

Net Weight:

59 kg / 130 lbs

Gross Weight:

65 kg / 143 lbs



SH-G6888

CHIN DIP LEG RAISE STATION

Dimensions:

1310 x 1170 x 2165 mm

52 x 46 x 85 in

Net Weight:

125 kg / 276 lbs

Gross Weight:

170 kg / 375 lbs



SH-G6890

STRETCHER

Dimensions:

1400 x 690 x 1200 mm

55 x 27 x 47 in

Net Weight:

35 kg / 77 lbs

Gross Weight:

40 kg / 88 lbs



SH-G6892

LAT PULLDOWN/SEATED ROW

Dimensions:

1945 x 1429 x 2189 mm

77 x 56 x 86 in

Net Weight:

169 kg / 373 lbs

Gross Weight:

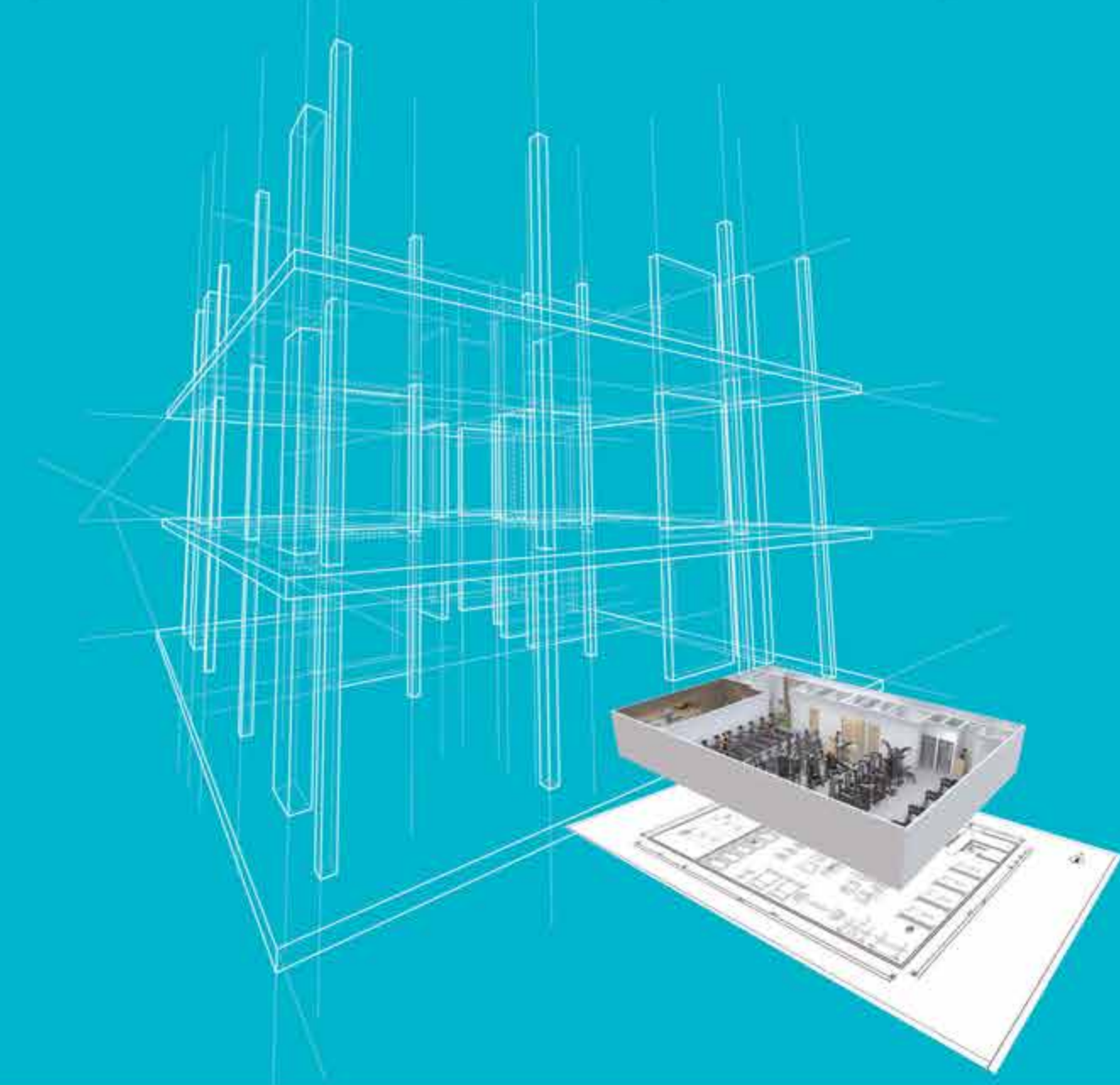
219 kg / 483 lbs

Weight Stack:

110 kg / 242 lbs



SHUA 3D DESIGN SERVICES

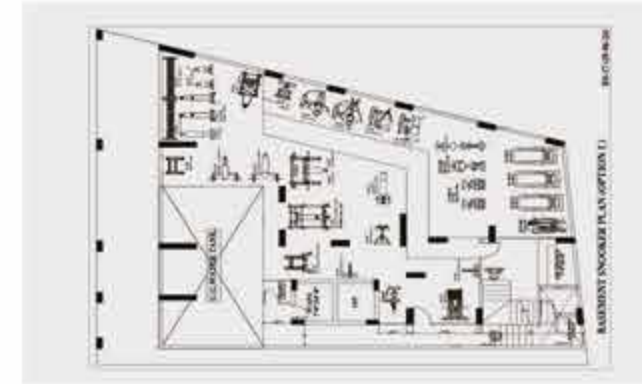


SHUA is committed to helping clients bring their vision to life with the support of a dedicated team of professionals and advanced 3D design services. By leveraging cutting-edge technology, SHUA enables clients to visualize their spaces in detail, ensuring every element is planned and tailored to perfection.

From the initial concept to the final layout, SHUA provides comprehensive solutions designed to optimize interior spaces with creativity and efficiency. Whether it's a commercial gym, a home workout area, or a specialized fitness facility, SHUA delivers layouts that are functional, innovative, and aligned with each client's unique goals.

With a focus on personalized service, SHUA works closely with clients to understand their needs and preferences, ensuring every project is a true reflection of their vision. Through this collaborative approach, SHUA creates spaces that inspire and enhance the fitness experience.

► 2D LAYOUT



► 3D LAYOUT





SHUA Industrial Park in Quanzhou Taiwan
Investment Zone (Unit 1)



SHUA Industrial Park in Quanzhou Taiwan
Investment Zone (Unit 2)



SHUA Industrial Park in Chidian



Industrial Park in Henan Shangqiu